

## PRODUCT OVERVIEW

TigoInsights is a Web-based business intelligence platform that enables a range of applications with visualization dashboards, analytics, reporting and alerting options. TigoInsights transforms real-time information from machines and devices into visual dashboards and analytics.

Along with the TigoEngine, TigoInsights aggregates data from a variety of sources from the manufacturing floor, such as air flow sensors, vibration sensors, pressure sensors, and more.

TigoInsights empowers you to ask questions of your data—opening new levels of operational insight to make better decisions, identify process improvement opportunities, and apply predictive analytics to optimize performance.

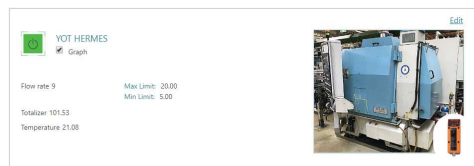
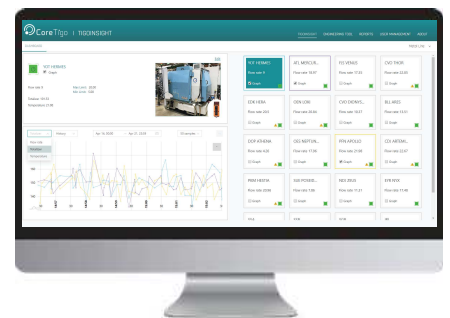
### Benefits

- Empower operators and managers with real-time visual data they can use to understand potential problems and optimize processes
- Identify and analyze opportunities for improvement
- Measure the impacts of changes
- Enrich your facility's analytics capabilities with powerful data directly from the manufacturing floor

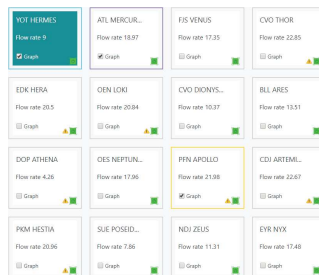
## Key Functionalities

### Visibility Dashboards

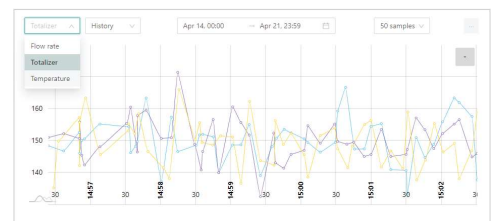
- Easy-to-understand visual dashboards and charts deliver fast, simple, accurate, and interactive insight to operators and managers
- Real-time and historical display of multiple machines and machine conditions
- Threshold configurations
- Graphical trend display



Machine status overview – real time evaluation of the machine data



Factory status overview – real time aggregation of plant floor data



Constructing and Interpreting of graphical trends display – analytics and evaluation of the data

### Analytics & Reports

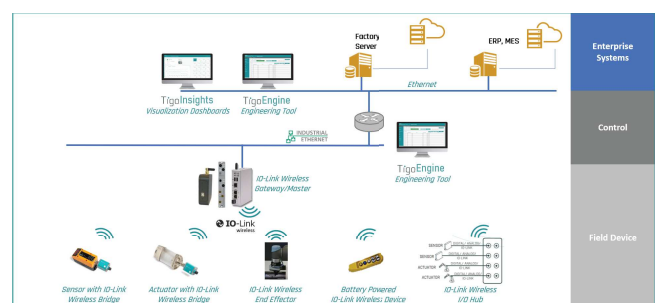
- Analysis of trends and anomalies. For example, detection of air leakage if too much air is consumed while machines are not in use
- Ad-hoc and scheduled reports

### System Requirements

- OS – Windows or Linux based
- DB – PostgreSQL
- CPU, Memory – based on number of devices and transactions
- Apache Kafka distributed streaming platform
- Supports on premises and cloud deployments

### Alerts & Notifications

- Alert threshold configuration
- Real-time dashboard view of alerts and notifications
- Wireless Health Monitoring – Signal level strength and abnormalities, signal quality and packet error rate, device warnings/errors
- Variety of notifications – Email, smartphone



## Industrial Applications

Tigolnsights is suitable for a variety of industrial applications and can be customized to fit the requirements of different types of customers and industrial facilities.

Air Flow Monitoring Application Example:

In the majority of industries, such as metalworks, food & beverage, and glass manufacturing, a factory-wide solution is required to monitor all the machines using compressed air to ensure optimal flow, prevent leakages and reduce waste. Cabling of the sensors from the machines to the network can be challenging in terms of cost and deployment effort. CoreTigo's IO-Link Wireless solution along with the Tigolnsights platform enables a simple and easy to deploy wireless solution. The Tigolnsights dashboards and analytics application enables to view data collected from the air flow sensors on each machine anywhere in the factory, analyze valuable data, and receive real-time alerts.

The solution drives numerous benefits:

- Annual reduction of energy consumption on compressed air; can save hundreds of thousands to millions of dollars annually
- Early fault detection - an automated solution enables real-time detection of leakages and potential malfunctions; manual processes are not frequent enough (can be up to a year until problem is detected)
- Non-optimal air flow for long periods can cause machine damage and malfunctions leading to unplanned downtime and maintenance expenses
- Accurate impact analysis of a fix or maintenance done on a machine
- Maintenance process optimization - Manual leakage detection processes are time consuming and less effective. Automated solution enables historical data analysis, ongoing monitoring, real-time alerts and early detection
- Reduce deployment complexity and cost reduction

